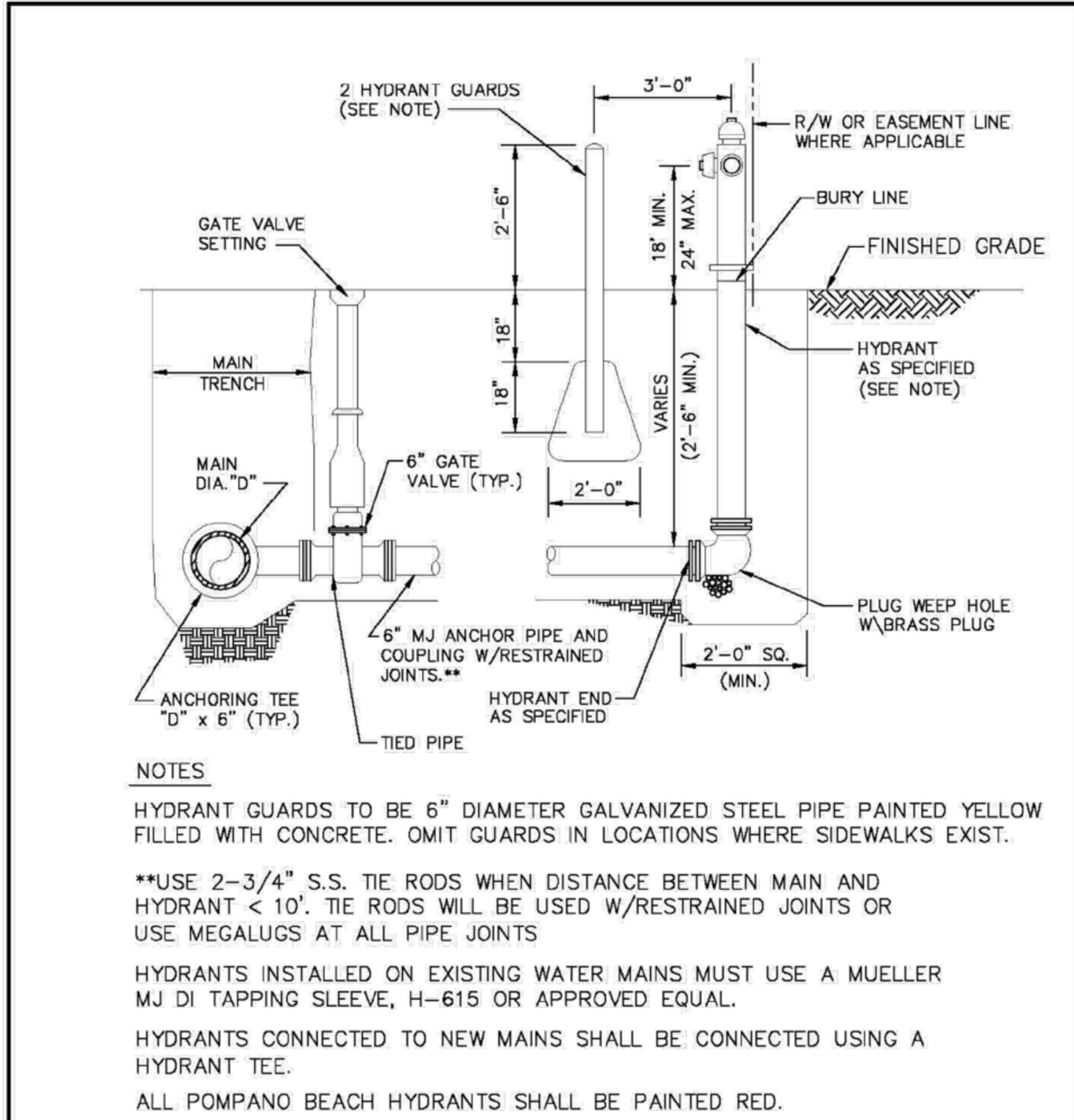


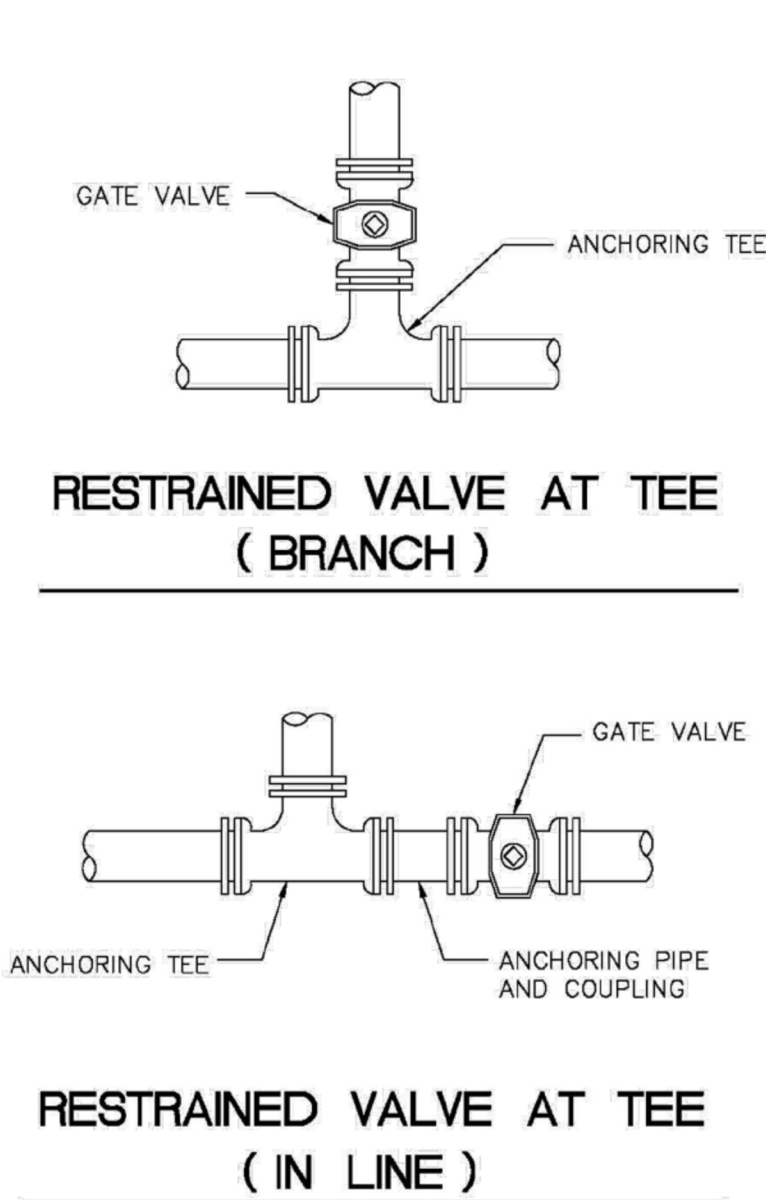
J:\City STANDARDS\2019 Standards Details\Water\1-3.dwg, 11/2/2018 2:42:06 PM



TYPICAL FIRE HYDRANT ASSEMBLY

ENGINEERING STANDARDS 2019			
REVISIONS	BY	DATE	ENGINEERING DIVISION
	T.W.	11-2007	CITY OF POMPAÑO BEACH
	T.W.	10-2010	
	S.S.	2-2012	
	S.S.	11-2012	
SCALE: N.T.S.			DATE: JUNE 1996 DWG. NO. 109-1

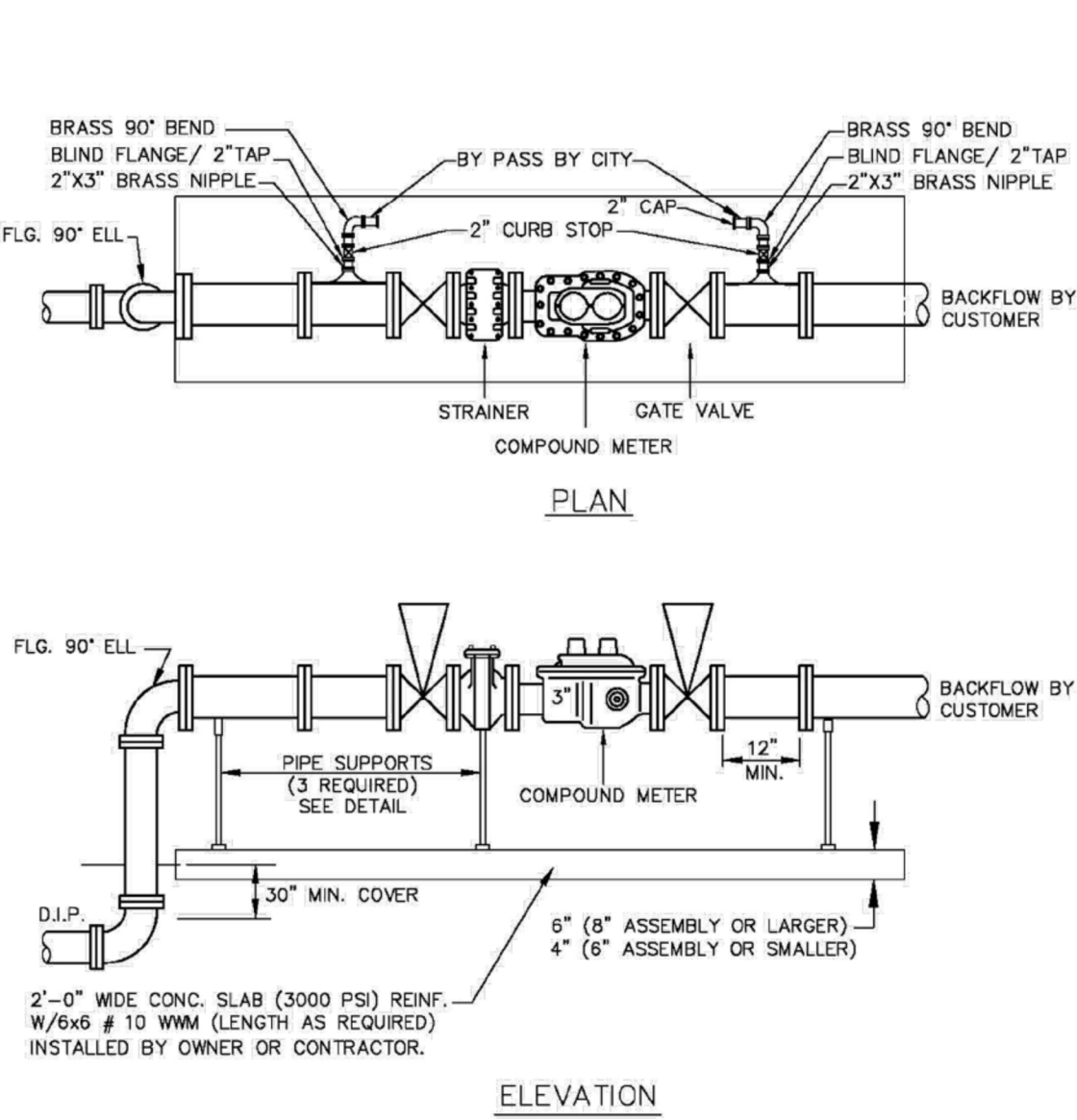
J:\City STANDARDS\2019 Standards Details\Water\1-3.dwg, 11/2/2018 2:46:59 PM



RESTRAINED VALVE AT TEE (BRANCH)

ENGINEERING STANDARDS 2019			
REVISIONS	BY	DATE	ENGINEERING DIVISION
	T.W.	04-08	CITY OF POMPAÑO BEACH
	S.S.	JUNE 2005	
	S.S.	01-2012	
	S.S.	11-2012	
SCALE: N.T.S.			DATE: JUNE 1996 DWG. NO. 111-1

J:\City STANDARDS\2019 Standards Details\Water\1-3.dwg, 11/2/2018 2:47:51 PM

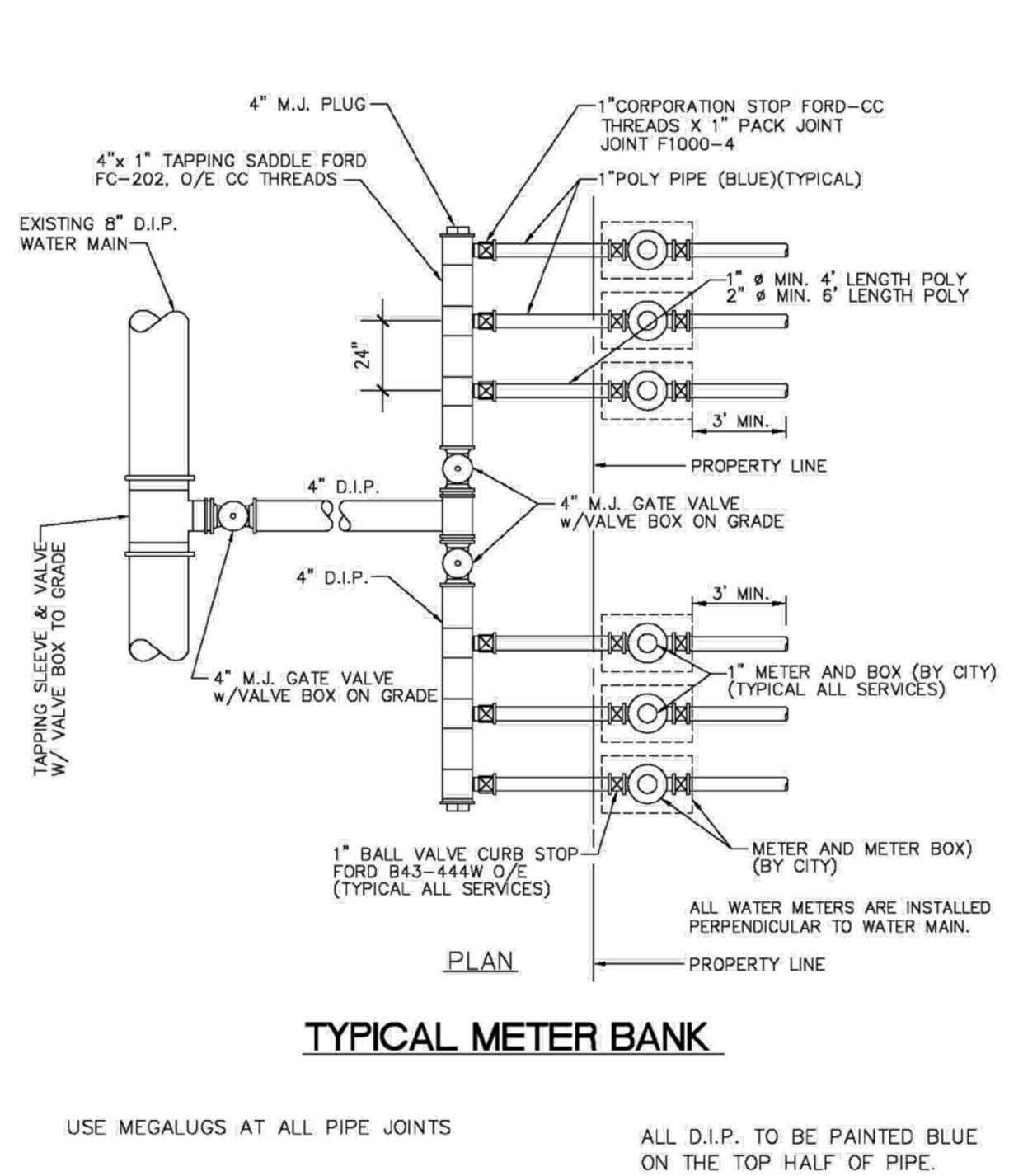


DOMESTIC SERVICE ONLY

PLEASE SEE METER INSTALL DIMENSION LIST ON STANDARD NO. 106-4

ENGINEERING STANDARDS 2019			
REVISIONS	BY	DATE	ENGINEERING DIVISION
	T.W.	04-08	CITY OF POMPAÑO BEACH
	S.S.	01-2012	
	S.S.	11-2012	
SCALE: N.T.S.			DATE: APRIL 2008 DWG. NO. 112-1

J:\City STANDARDS\2019 Standards Details\Water\1-3.dwg, 11/2/2018 2:48:59 PM

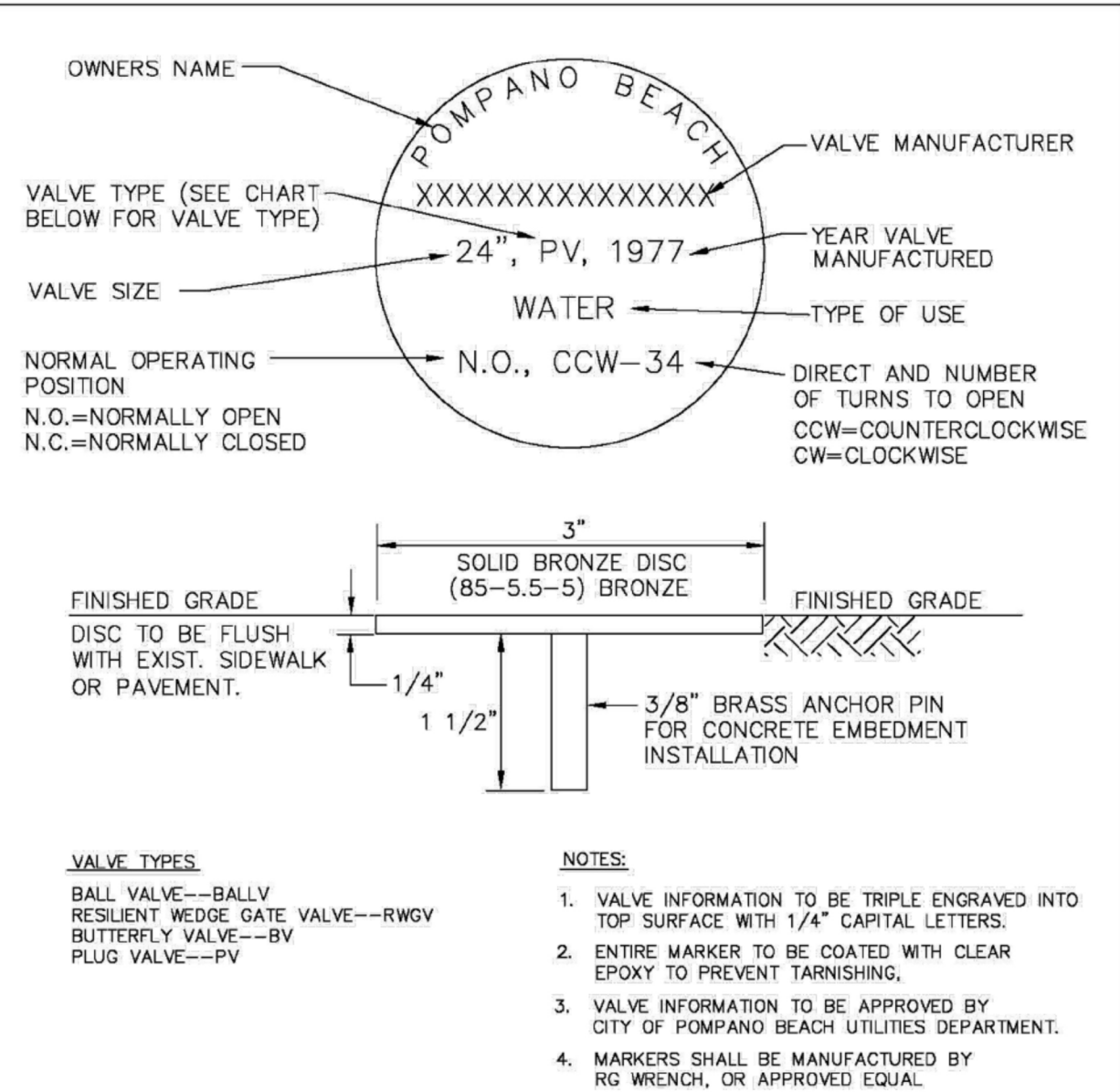


TYPICAL METER BANK

USE MEGALUGS AT ALL PIPE JOINTS ALL D.I.P. TO BE PAINTED BLUE ON THE TOP HALF OF PIPE.

ENGINEERING STANDARDS 2019			
REVISIONS	BY	DATE	ENGINEERING DIVISION
	T.W.	02-09	CITY OF POMPAÑO BEACH
	S.S.	09-2011	
	S.S.	11-2012	
SCALE: N.T.S.			DATE: FEBRUARY 2009 DWG. NO. 113-1

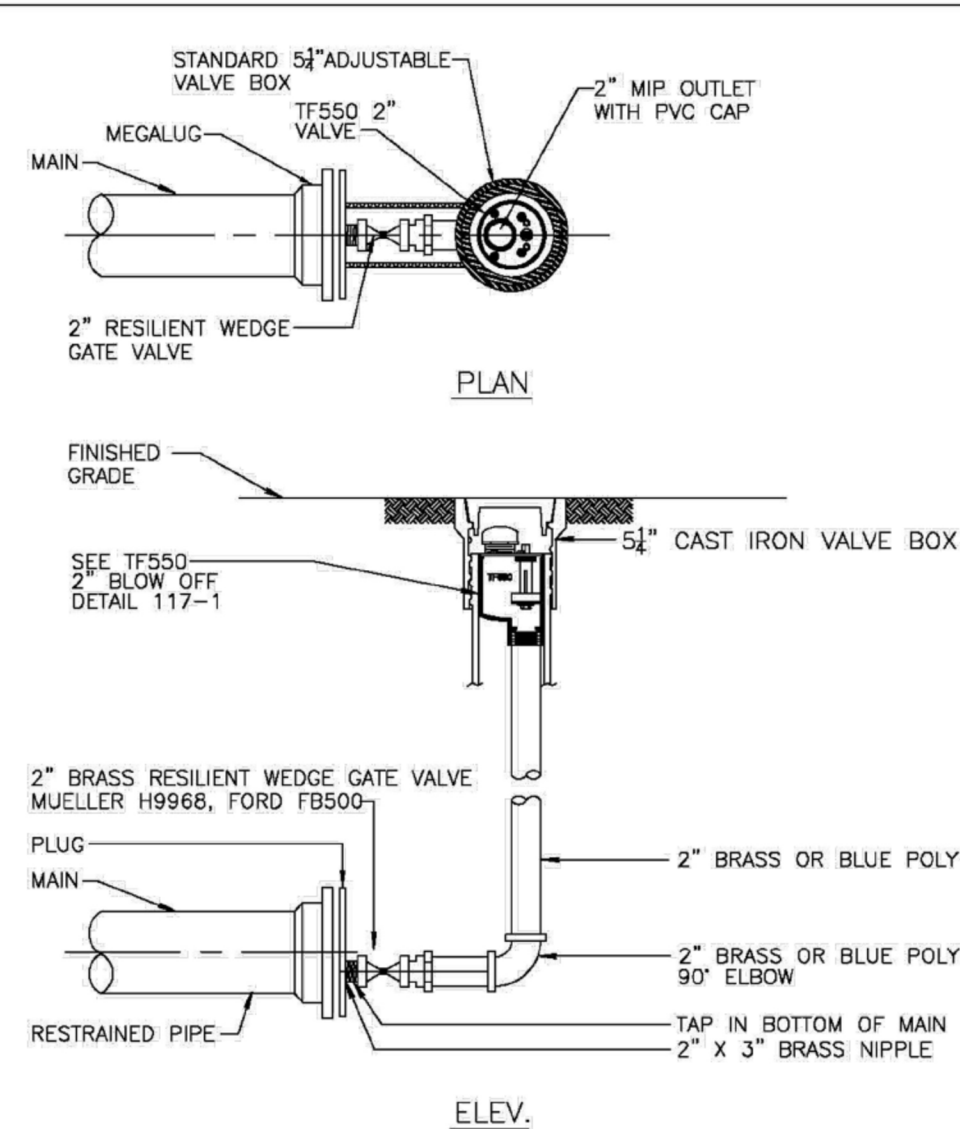
J:\City STANDARDS\2019 Standards Details\Water\1-3.dwg, 11/2/2018 2:49:27 PM



UNDERGROUND VALVE IDENTIFICATION MARKER

ENGINEERING STANDARDS 2019			
REVISIONS	BY	DATE	ENGINEERING DIVISION
	T.W.	11-2007	CITY OF POMPAÑO BEACH
	T.W.	02-2008	
	S.S.	1-24-12	
SCALE: N.T.S.			DATE: FEB. 1998 DWG. NO. 115-1

J:\City STANDARDS\2019 Standards Details\Water\1-3.dwg, 11/2/2018 2:50:06 PM

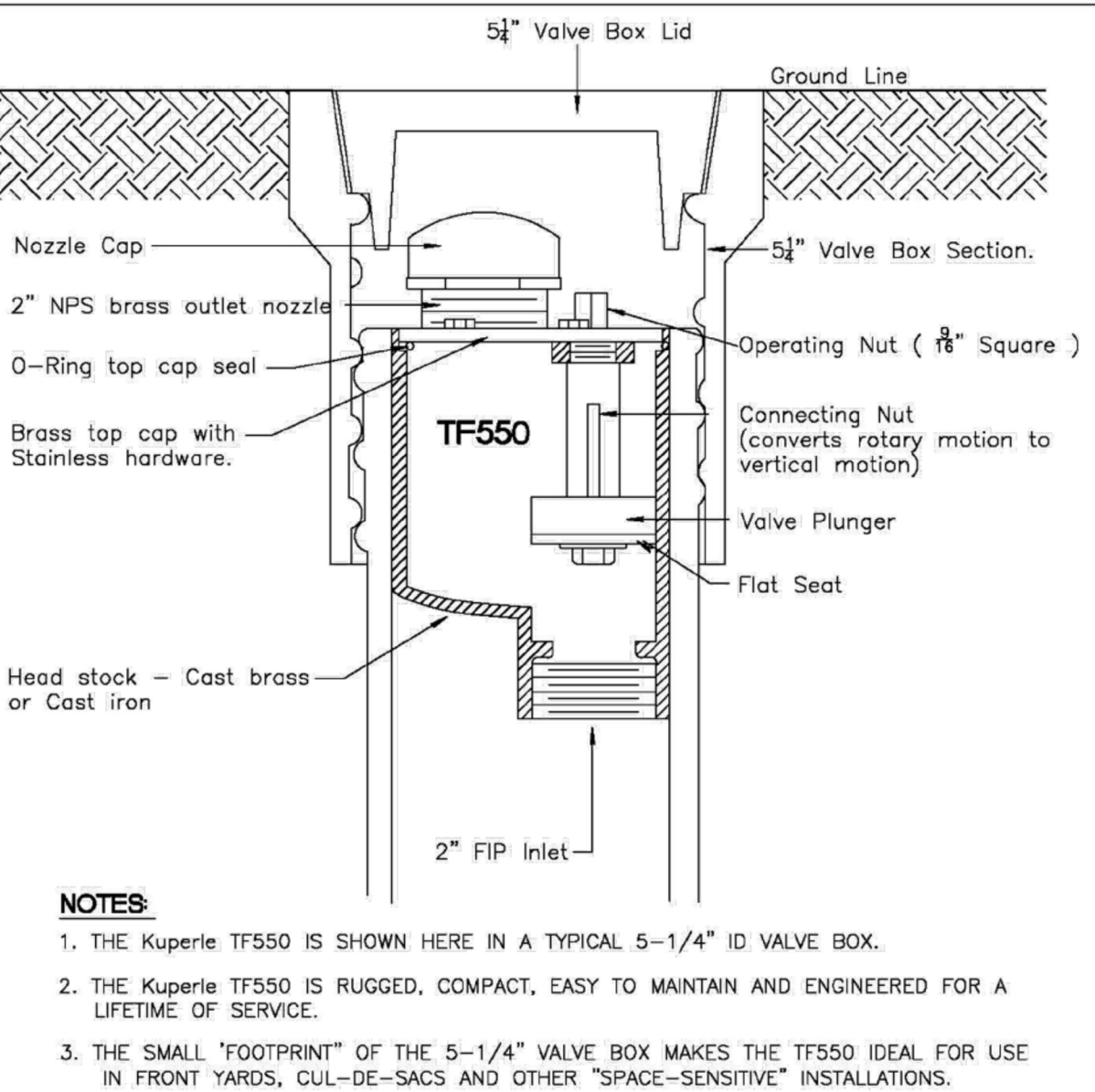


TYPICAL 2" TERMINAL BLOW OFF

USE MEGALUGS AT ALL PIPE JOINTS ALL D.I.P. TO BE PAINTED BLUE ON TOP HALF OF PIPE.

ENGINEERING STANDARDS 2019			
REVISIONS	BY	DATE	ENGINEERING DIVISION
	T.W.	11-2007	CITY OF POMPAÑO BEACH
	T.W.	07-2008	
	S.S.	01-2012	
SCALE: N.T.S.			DATE: JUNE 2005 DWG. NO. 116-1

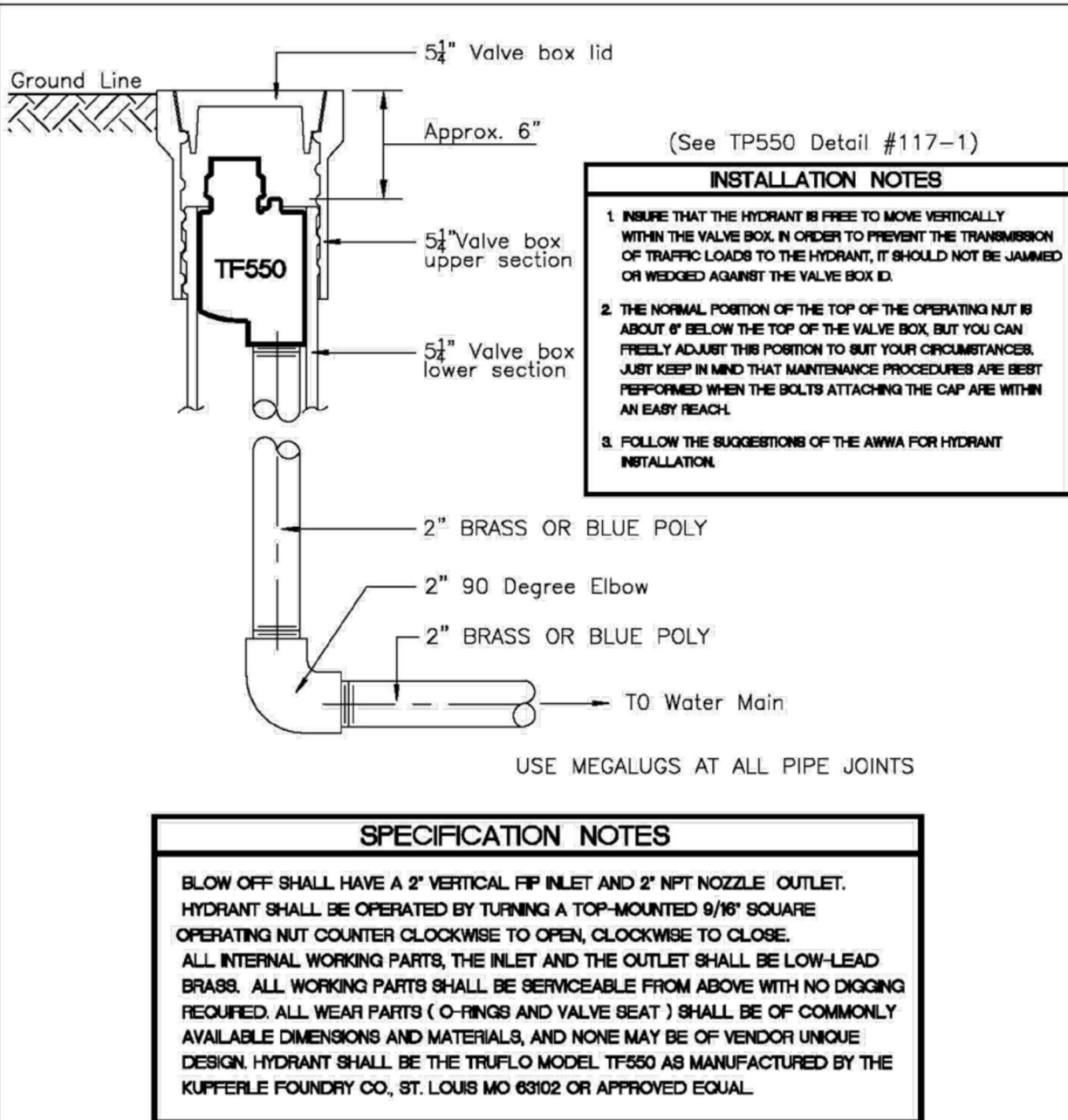
J:\City STANDARDS\2019 Standards Details\Water\1-3.dwg, 11/2/2018 2:50:45 PM



KUPPERLE TF550 2" BLOW OFF OR APPROVED EQUAL

ENGINEERING STANDARDS 2019			
REVISIONS	BY	DATE	ENGINEERING DIVISION
	T.W.	07-2008	CITY OF POMPAÑO BEACH
	T.W.	01/31/12	
	S.S.	01/31/12	
SCALE: N.T.S.			DATE: FEBRUARY 2008 DWG. NO. 117-1

J:\City STANDARDS\2019 Standards Details\Water\1-3.dwg, 11/2/2018 2:51:16 PM



TF550 INSTALLATION AND SPECIFICATION

ENGINEERING STANDARDS 2019			
REVISIONS	BY	DATE	ENGINEERING DIVISION
	T.W.	11-2007	CITY OF POMPAÑO BEACH
	T.W.	07-2008	
	S.S.	01-2012	
SCALE: N.T.S.			DATE: FEBRUARY 2006 DWG. NO. 117-2

OWNER | DEVELOPER:



DESIGN + BUILD CONTRACTOR:



DESIGN CONSULTANT:



ARCHITECT OF RECORD:

RUBEN J. PUJOL
A.I.A. AR # 0010458
PHONE: (305) 968-2155
12237 S.W. 204 TERRACE
MIAMI, FLORIDA 33177

SIGN AND SEAL:



Digitally signed
by Fabio J
Delgado De
Michele
Date:
2023.06.16
19:58:04 -04'00'

REVISIONS/COMMENTS:

PROJECT:

324 HAUS
MIXED USE | FLEX BUILDING
324 NW 6TH STREET
POMPAÑO BEACH, FL 33060

PROJECT NO.: 22-031

DRAWN BY:
DATE: JULY- 2022

SHEET NAME:

WATER AND SANITARY
SEWER DETAILS

DRC
P22-12000032
07/19/2023